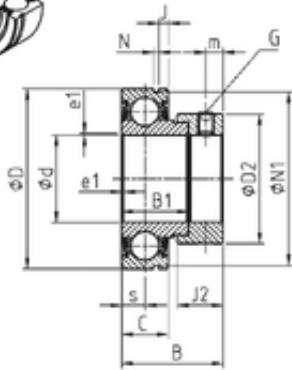




# NTN Bearing Rolamentos do Brasil Ltda.



## 31,75 mm x 62 mm x 35,7 mm SNR CES206-20 Deep Groove Ball Bearings

Bearing No. CES206-20

CES206-20 Bearing 2D drawings and 3D CAD models

Size	31.75x62x35.7 mm
Bore Diameter	31,75 mm
Outer Diameter	62 mm
Width	35,7 mm
d	31,75 mm
D	62 mm
B	35,7 mm
B1	23,8 mm
C	16 mm
e	1 mm
a	3,96875 mm
m	6 mm
s	8 mm
D2	44,5 mm
J	3,18 mm
N	1,9 mm
N1	59,61 mm
Thread (G) - 5/16-24UNF	5/1624UNF
J2	15,9 mm
Weight	0,28 Kg
Basic dynamic load rating (C)	19,5 kN
b	1.9 mm
B2	15.9 mm
d1	44.5 mm
G	5/16-24UNF



## NTN Bearing Rolamentos do Brasil Ltda.

r	1
S	8 mm
SW	3.97 mm
C0	11.2 kN
T min.	-20 ° C
T max.	100 ° C
Recommended tightening torque for set screw	8 Nm